

Canon



Xario 200G

Go Anywhere Anytime

Xario 200G



Ultra-fast
Boot-up



Wireless



Up to
8 hours*



Cable-free

Xario's proven high image quality and a full spectrum of clinical applications help you provide optimal patient care. With up to 8 hours of battery-powered, cable-free operation, the new Xario 200G combines outstanding performance with amazing mobility. With a fast boot-up time from smart standby mode Xario 200G is always ready when you are.



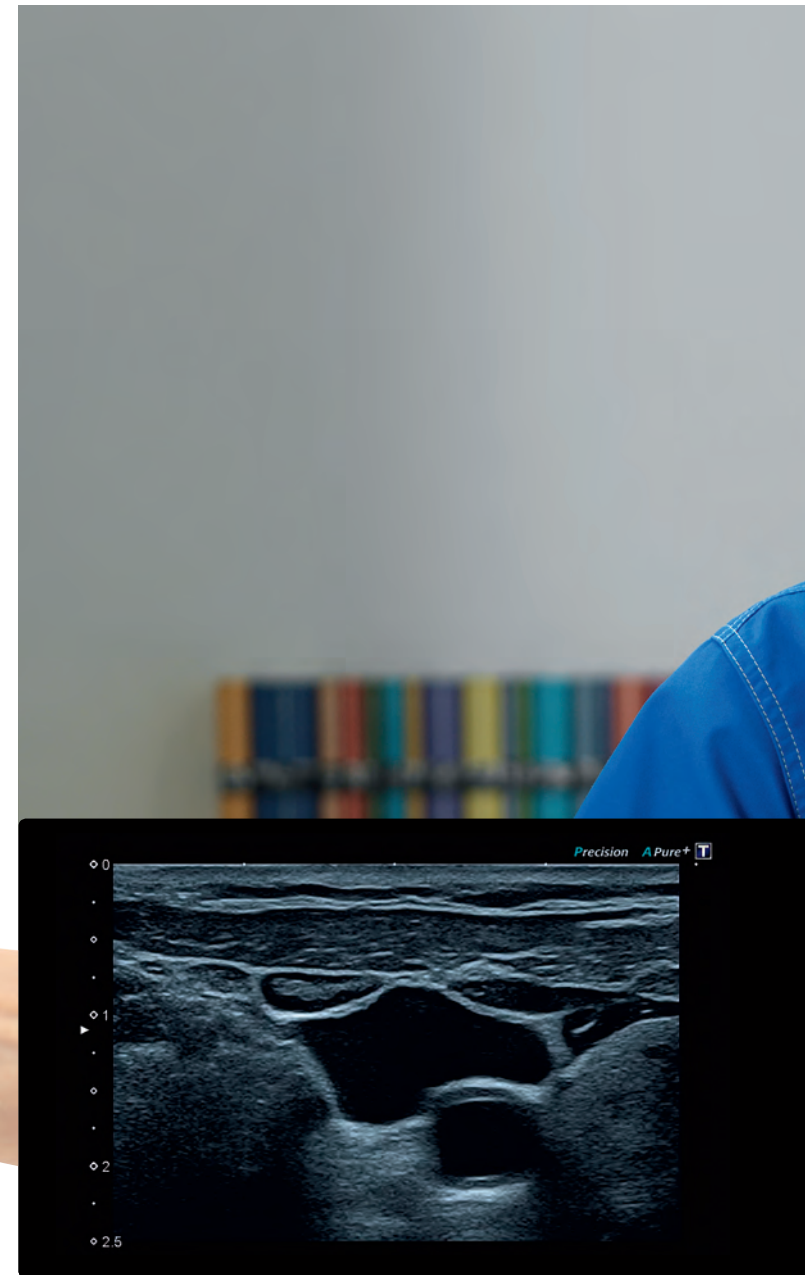


More clinical detail in less time*

Only the best image quality allows you to make a diagnosis quickly and with confidence. Xario's imaging technologies provide you with better image quality by reducing noise, strengthening signal and improving visualization. Canon Medical Systems' unique iStyle+ Productivity Suite enables faster exams and greater productivity by reducing keystrokes, improving workflow and raising the consistency of exams.

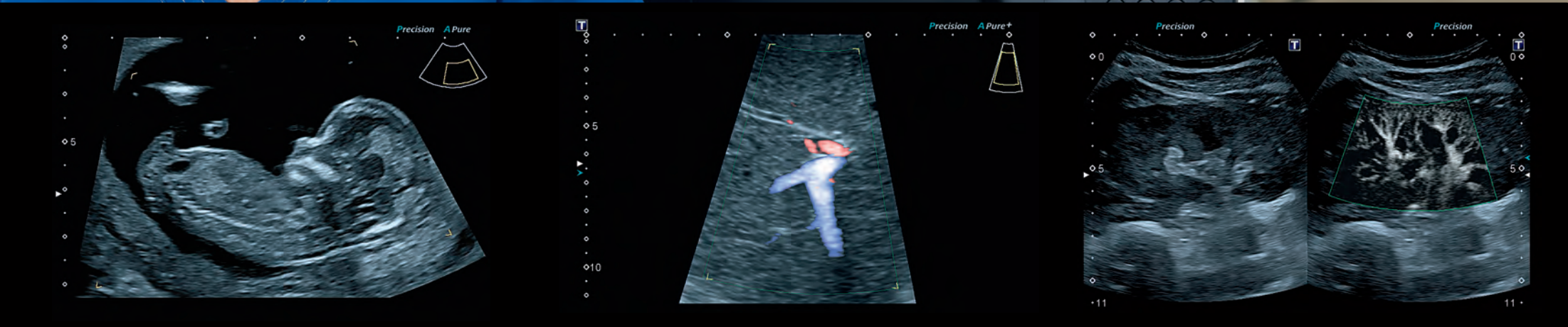


From standard models to specialty probes – all of Xario's transducers deliver superb image quality in a wide range of clinical applications.



More clarity, better clinical results

Precision Imaging and ApliPure+ deliver outstandingly smooth images with sharpened outline of lesions, enhanced image uniformity and reduced clutter.



Depth and detail on all patients

Exclusive Differential Tissue Harmonic Imaging (D-THI) provides images of high spatial resolution and contrast, alongside greatly increased penetration.

High resolution and sensitivity

Advanced Dynamic Flow (ADF) elevates color Doppler imaging to a whole new level of spatial resolution to reveal minute vasculature with extraordinary accuracy and detail.

Seeing the unseen with SMI

Superb Micro-vascular Imaging (SMI) expands the range of visible blood flow to visualize microvascular flow at high frame rates, enhancing diagnostic confidence in evaluating lesions, cysts and tumors.

Versatility in a wide range of exams

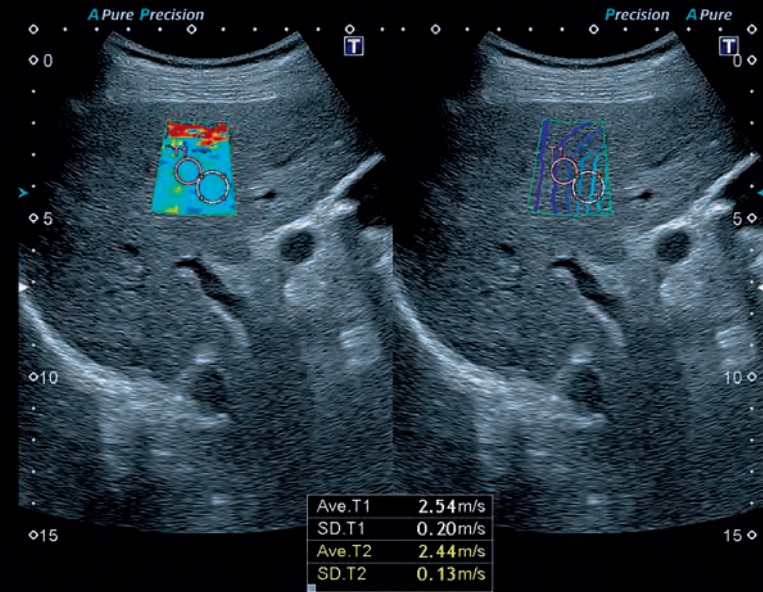
From abdominal imaging to obstetrics and women's health, from specialized cardiac studies to point of care application, from musculoskeletal to vascular exams – Xario 200G delivers outstanding clinical performance for routine and advanced studies in a wide range of clinical settings.





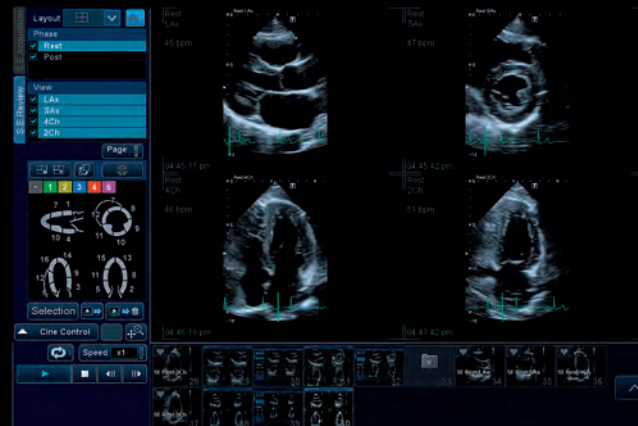
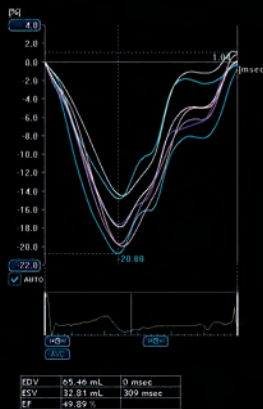
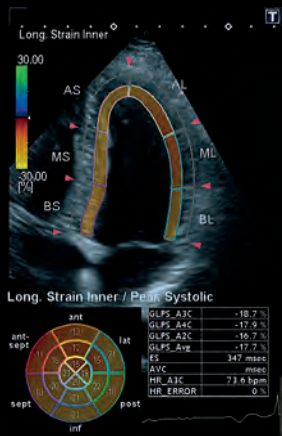
Volume imaging suite

Luminance offers natural-looking 3D renderings of high quality and definition, providing strong visual feedback on depth and detail.



Shear wave elastography

Provides a quantitative measure and display of tissue elasticity in realtime. The unique propagation map is an intuitive tool to visually assess the quality of your elastogram.

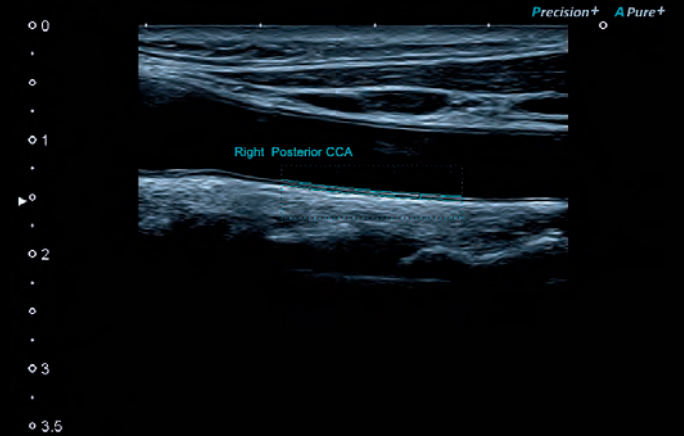


Wall Motion Tracking

Offers immediate visual quantitative access to global and regional myocardial wall motion dynamics, enabling clinicians to perform a more advanced cardiac examination during daily routine scanning.

Stress Echo

Fast and accurate cardiac assessment supporting standard and user-defined protocols for exercise and pharmacological studies.



Auto IMT

An easy-to-use, automated tool to determine the thickness of the intima-media layers of the carotid walls.

*See Lumason® full prescribing information

Extraordinary detail, more confident diagnostics

Each of Xario's unique imaging technologies provides you with better image quality. All functions work hand in hand with other imaging modes for even greater uniformity within each application.



Fully customizable console

Xario's console and mode-sensitive touch screen suit your clinical needs and personal preferences, simply by allowing you to assign functions to the keys of your choice.



Instant image optimization

QuickScan automatically optimizes the image with a simple push of a button so you can achieve greater consistency in your exams in less time.



Reduce keystrokes, shorten exam time

Xario's new Quick Start menu helps you adjust the imaging parameters to any specific clinical target while ensuring a smooth, uninterrupted workflow.

Productivity expanded

From imaging to quantification, from reporting to archiving, Canon Medical Systems provides a full-spectrum solution that helps you manage your study data more efficiently. Thanks to the system's embedded raw data functionality you can review, analyze, report and archive your clinical data anytime with no loss of functionality.



Exporting your clinical data

Xario ships standard with a DVD writer, as well as network and USB connections for study documentation, storage and data export.



Reporting options

Xario provides comprehensive onboard facilities to generate and print customizable reports including measurements, charts, clinical images and text.



Managing your study data

Xario's fully integrated patient and image management system allows you to review and manage your studies conveniently on the system.

Cable-free operation without compromise

Xario 200G combines comprehensive clinical performance with outstanding mobility and cable-free operation. While the system is ready to use in just a few seconds, its wirelessly connected peripheral devices eliminate cables that delay you from moving the system around your facility.



Powerful battery

Xario 200G offers total freedom with extended battery life, allowing you to provide optimum patient care anywhere, anytime.



Smart standby

The system's presetable auto-freeze and -standby modes help you save valuable battery time, while ultra-fast boot-up lets you start your exam instantly.



Wireless operation

Peripheral devices can be operated wirelessly to avoid tangled cables and to further enhance your efficiency in mobile scanning situations.





Cable management

Xario's smart cable management system helps you make an end to tangled wires and lets you move the system more easily and safely.



Transducer connectors

Xario's slim probe connectors with large lock levers and active port indicator simplify both workflow and transducer selection.



Functional design

Designed to help you manage ultrasound examinations on the move efficiently, the system's peripheral basket stores everything needed for exams on the go.

Xario 200G

Follow us: <https://us.medical.canon>



@CanonMedicalUS



Canon Medical Systems USA, Inc.



+CanonMedicalUS

Canon

CANON MEDICAL SYSTEMS USA, INC.

<https://us.medical.canon>

2441 Michelle Drive, Tustin CA 92780 | 800.421.1968

©Canon Medical Systems, USA 2019. All rights reserved.

Design and specifications subject to change without notice.

Aplio, ApliPure, Dynamic Flow and Made for Life are trademarks of Canon Medical Systems Corporation. YouTube logo is a trademark of Google Inc. TWITTER, TWEET, RETWEET and the Twitter logo are trademarks of Twitter, Inc. or its affiliates. LinkedIn, the LinkedIn logo, the IN logo and InMail are registered trademarks or trademarks of LinkedIn Corporation and its affiliates in the United States and/or other countries. Canon Medical Systems Corporation meets internationally recognized standards for Quality Management System ISO 9001, ISO 13485.

Canon Medical Systems Corporation meets the Environmental Management System standard ISO 14001.

Disclaimer: Some features presented in this brochure may not be commercially available on all systems shown or may require the purchase of additional options.

Please contact your local Canon Medical Systems representative for details.

ULBR13224US MCAUS0304EB

Made For life