

Canon



***Aplio i700***

Intuitive. Intelligent.  
Innovative.

General Imaging



# *Aplio i700*

## The perfect fit

Aplio™ i700 helps you provide a high quality of care in a short amount of time. Combining superb imaging with exceptional ease of use and a wide range of expert tools, Aplio i700 is designed to optimally meet your clinical needs at all times.

- ✓ iBeam architecture
- ✓ Intelligent design
- ✓ Intuitive workflow support



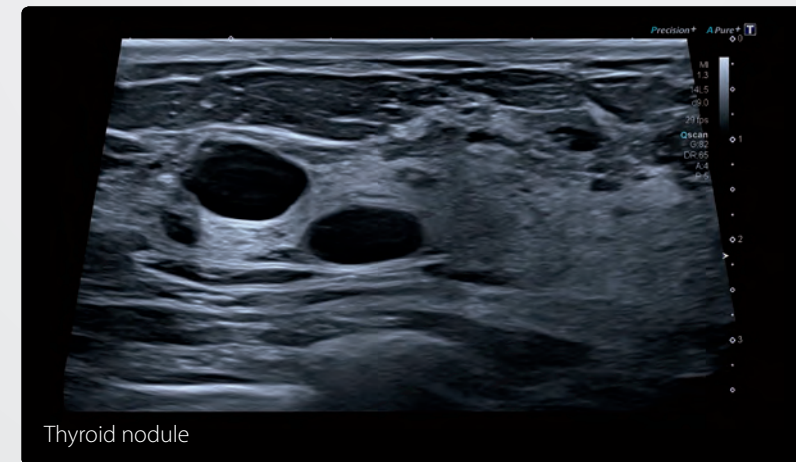


# Crystal-clear imaging

From the smallest to the toughest patients, Aplio's innovative iBeam architecture with dramatically increased processing power\* provides outstanding imaging clarity and definition while significantly enhancing penetration.

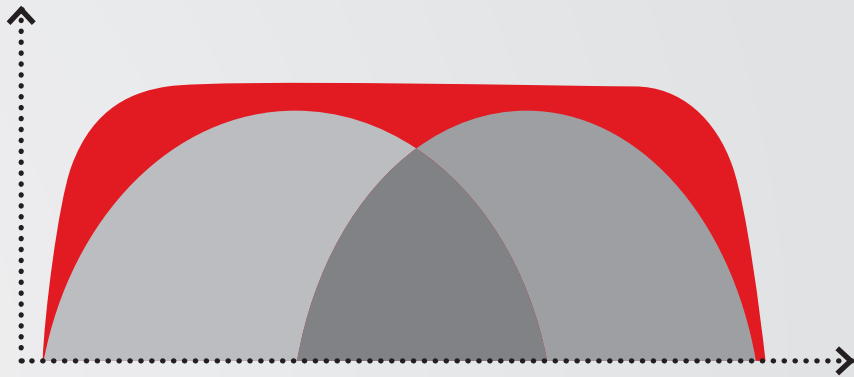
- ✓ iBeam architecture
- ✓ intelligent Dynamic Micro-Slice

Aplio iSeries' Intelligent Dynamic MicroSlice technology reveals more detail by electronically sharpening the image slice thickness.



\*Compared to Aplio Platinum Series.

Better diagnostics\* start here



Aplio's ultra-wideband i-series transducers cover the same bandwidth as two conventional transducers, providing sensitivity and resolution for both near and far field. While helping to reduce cost, this innovative transducer design can provide better imaging.\*\*



\*\* \*Compared to Aplio Platinum Series.

Ultra-Wideband  
Sector i6SX1



Ultra-Wideband  
Linear i18LX5



Ultra-Wideband  
Convex i8CX1



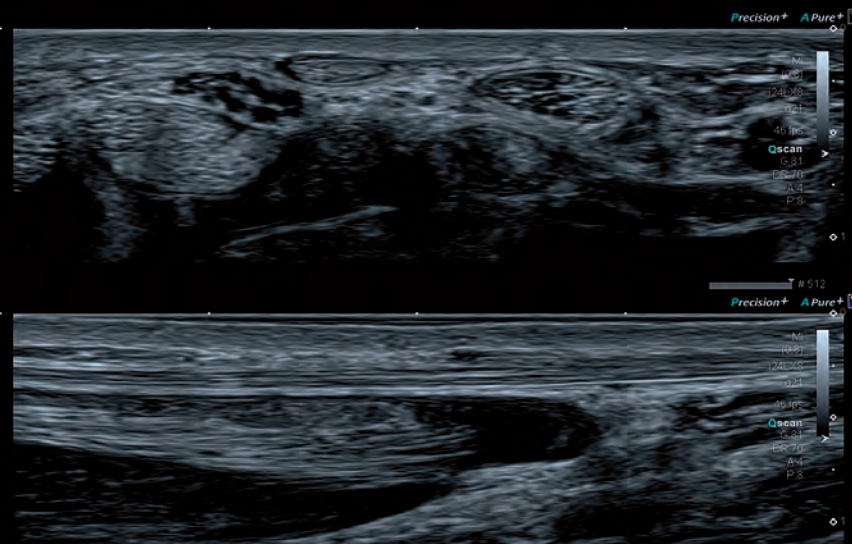
# Enjoy the perfect picture

Each of Aplio's unique imaging technologies provides you with excellent image quality by reducing clutter, strengthening signal and improving visualization. All functions work hand in hand with other imaging modes for uniformity across all applications.

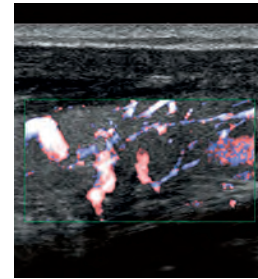
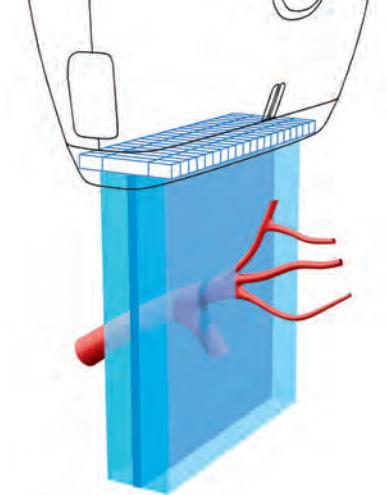
- ✓ iBeam architecture
- ✓ intelligent Dynamic Micro-Slice



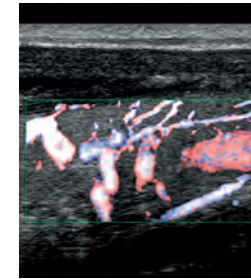
Precision+ offers outstandingly smooth images with sharpened outline of lesions, enhanced image uniformity and reduced clutter.



ApliPure™+ compounding delivers increased imaging contrast and reduced speckle noise to improve visualization.



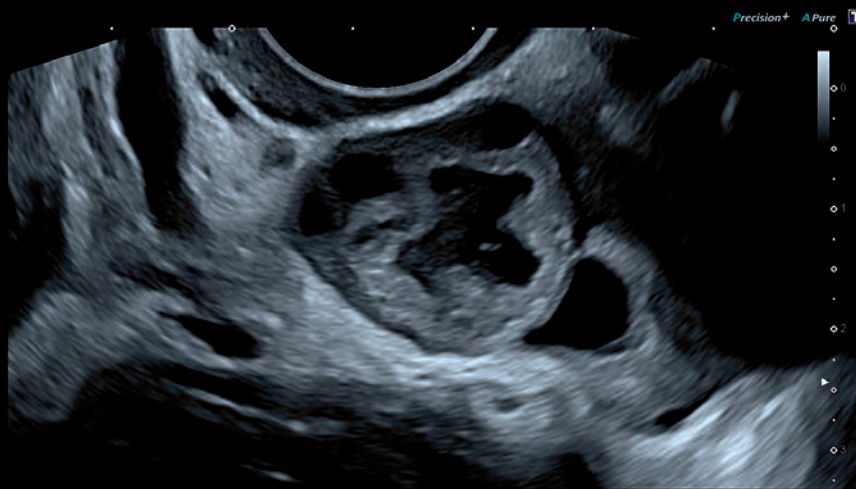
**Conventional**



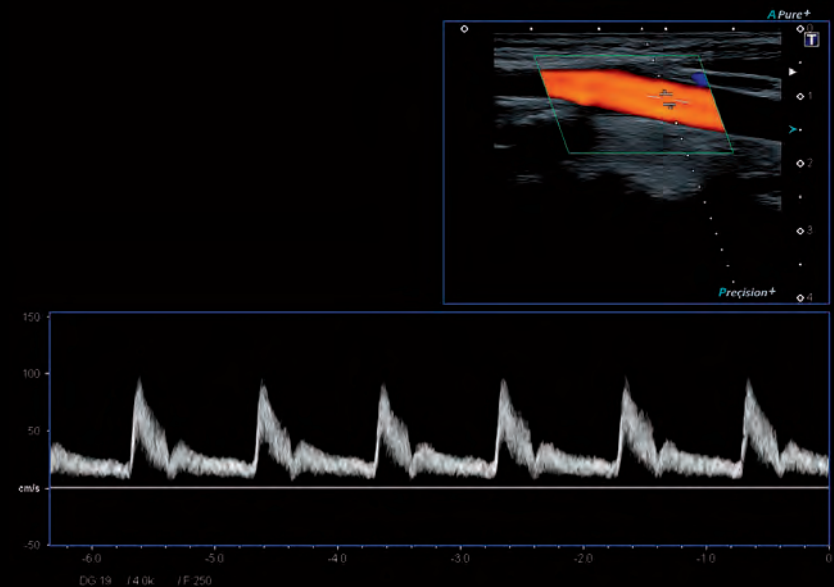
**Adaptive slice thickness**

## Optimal imaging in each mode

The i-series' adaptive Slice Thickness Control option helps you achieve optimal resolution and sensitivity simultaneously on each imaging mode. So while you improve the continuity of blood flow imaging with a wider beam, you can maintain the best possible B-mode quality and resolution at the same time.



Differential Tissue Harmonics provides harmonic images of superb spatial resolution, alongside greatly enhanced penetration.



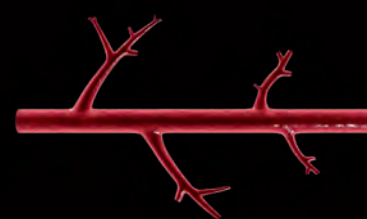
Aplio's wideband transducer and signal processing technology delivers outstanding sensitivity, penetration and spatial resolution for all Doppler modes.



# Seeing the unseen with SMI

Experience color flow imaging with superb detail and definition on Aplio i700. Superb micro-vascular imaging (SMI) expands the range of visible blood flow to visualize low-velocity microvascular flow never before seen with diagnostic ultrasound.

- ✓ Advanced low-flow imaging
- ✓ Smart 3D SMI

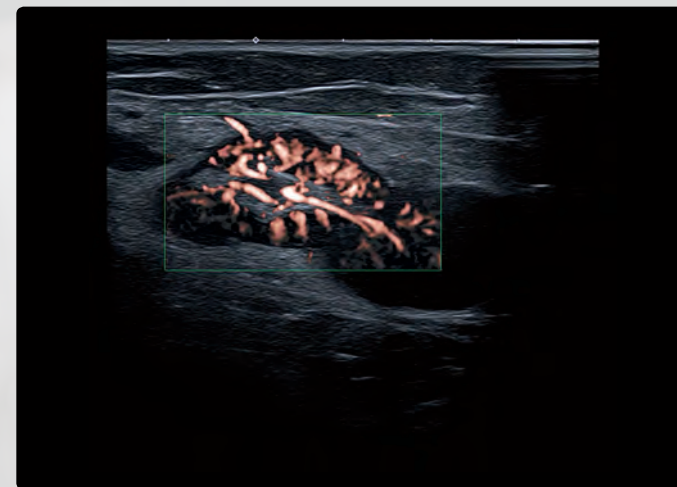


**Conventional**

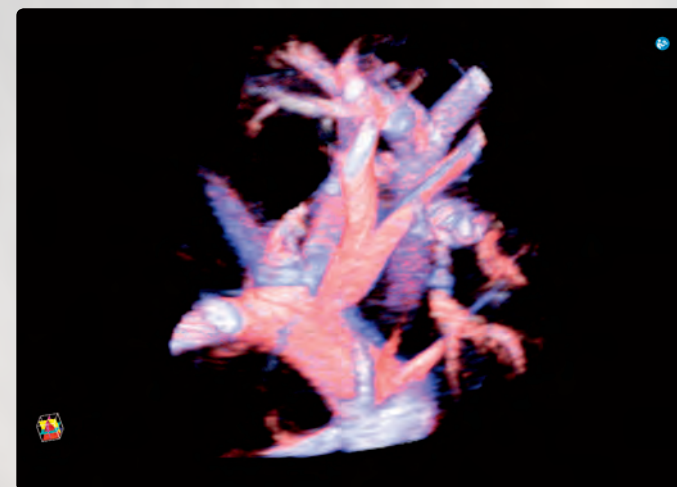


**SMI**

Traditional color Doppler imaging (left) removes clutter from the images by suppressing low-velocity components, resulting in a loss of flow visualization in tiny vessels. SMI (right) separates flow from overlaying tissue motion effectively, while preserving low-flow components with detail and definition.



SMI's level of vascular visualization, combined with high frame rates, advances diagnostic confidence when evaluating lesions, cysts and tumors.



Smart Sensor 3D allows you to acquire accurate 3D volumes with a standard linear or convex transducer, also in SMI mode.

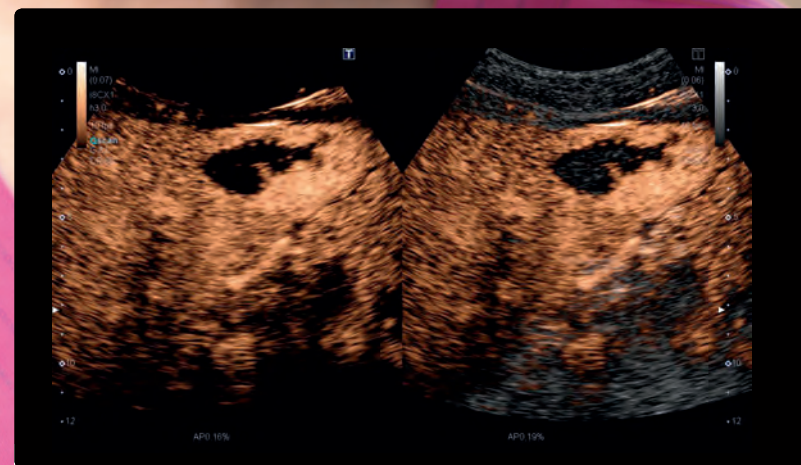
# Increase your confidence, expand your capability

Visualization and characterization of liver lesions using Lumason® (Bracco)\* help in optimizing your patients' clinical pathways. Aplio's extensive suite of advanced CEUS imaging and quantification functions can help you get answers quickly and with confidence.

- ✓ Realtime Quad mode
- ✓ Comprehensive CEUS package
- ✓ Shear wave elastography



\* See full Lumason® prescribing information



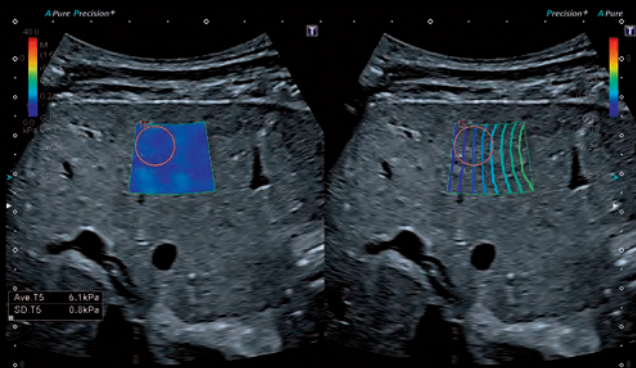
Aplio's comprehensive CEUS imaging and quantification package allows you to assess perfusion dynamics in a wide range of clinical settings, including specialized exams such as vesicoureteral reflux (VUR).

## Better intercostal access\*

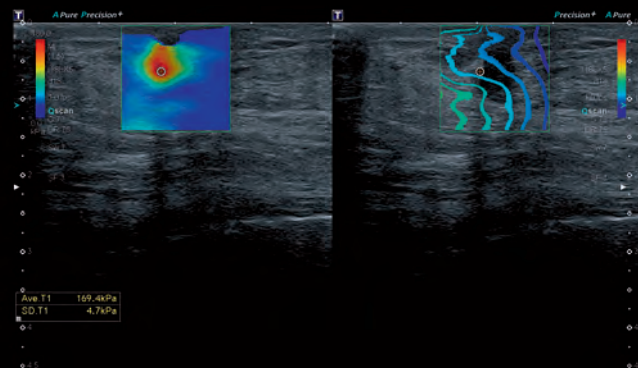
Aplio's thin convex transducers are ideally suited for intercostal scanning. The new biopsy attachment with reduced blind zone and selectable puncture angle facilitates optimal puncture conditions for each patient.



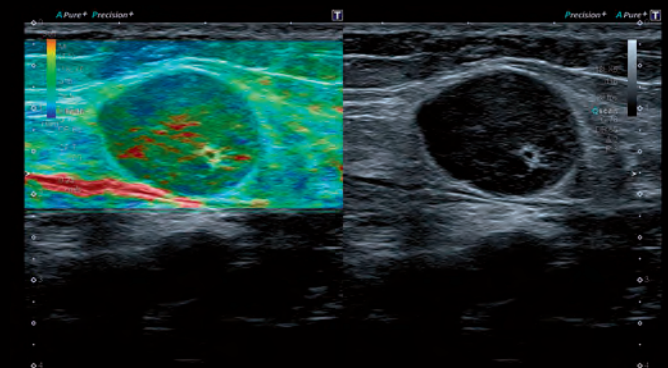
\*Compared with 6C1



Canon Medical Systems' shear wave technology provides a quantitative measure and realtime display of tissue elasticity in a variety of clinical settings ranging from abdominal to small parts examinations.



Smart Maps help you visualize and quantify shear wave propagation in realtime. Aplio's unique propagation map is a powerful and intuitive tool to visually assess the quality of an elastogram.

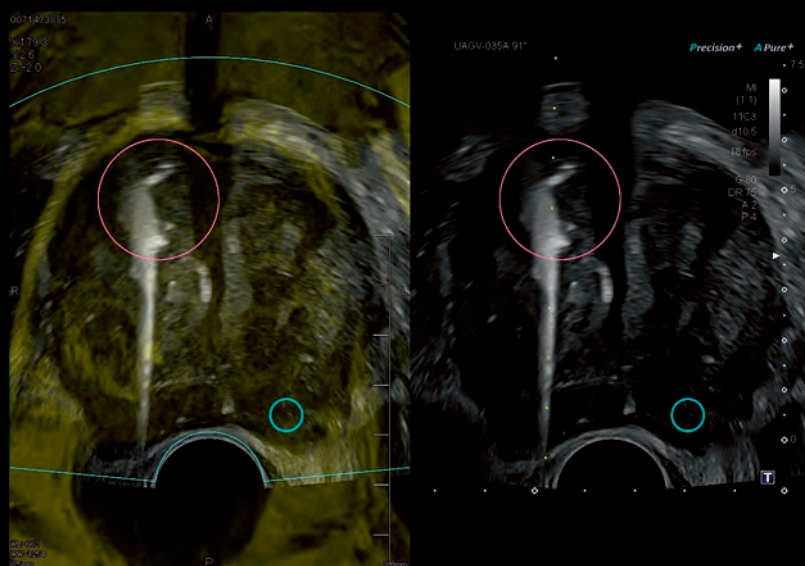


The system's comprehensive strain elastography suite with raw data functionality assists you in localizing and assessing palpable masses sensitivity.

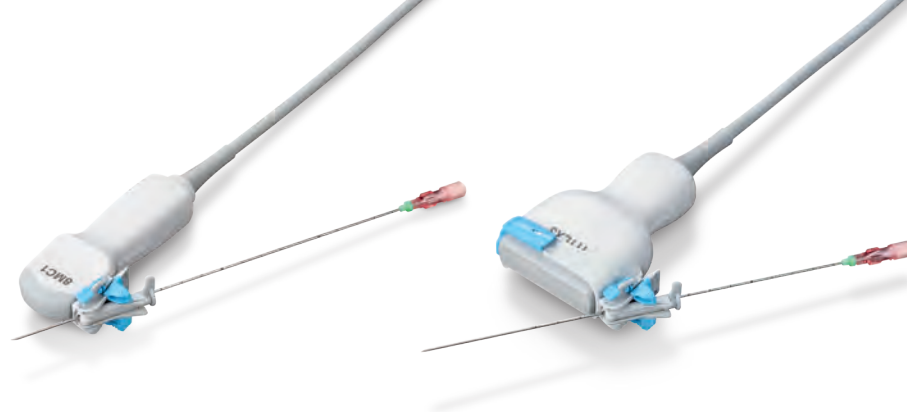
# Navigate with ease, treat with confidence

Aplio provides a wide range of tools for advanced imaging and interventions. Dedicated transducers and an abundance of imaging and navigation tools help you enhance confidence and accuracy during interventional procedures and their follow-up.

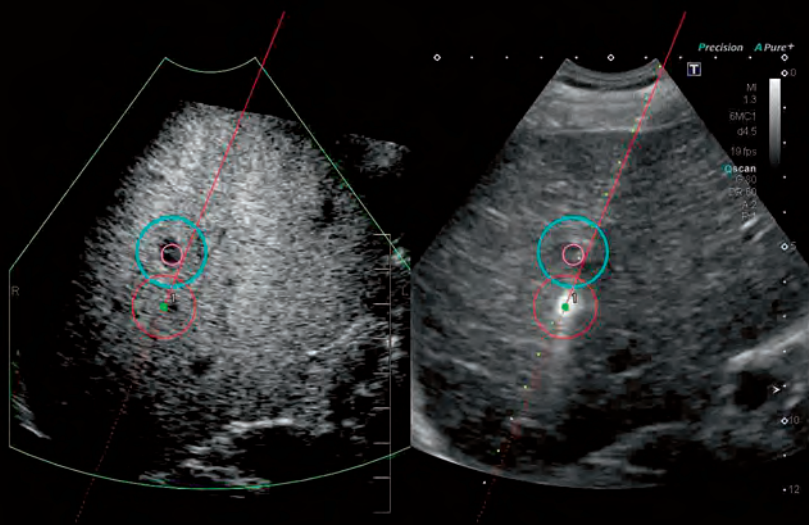
- ✓ Natural looking 3D rendering
- ✓ Comprehensive CEUS package
- ✓ 3D volume slicing



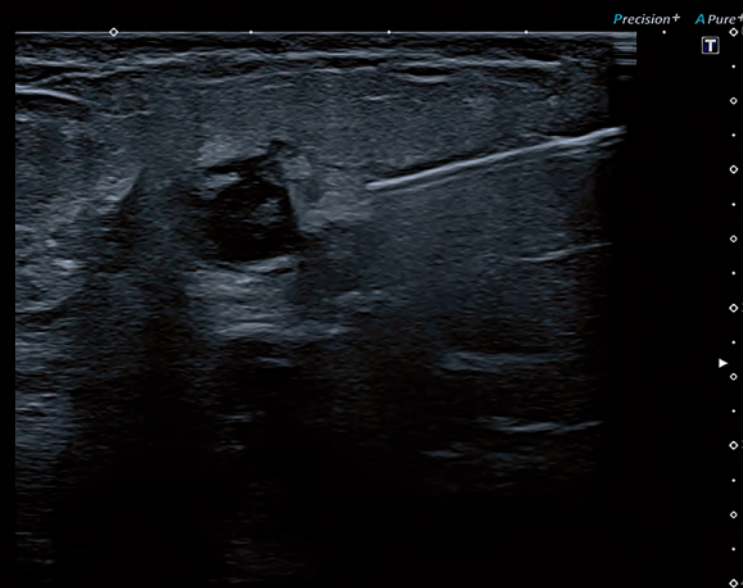
Aplio i-series is compatible with a variety of needle guides with multi-angle or free angulation capability, either using brackets or directly mounted on the transducer to ensure easy handling with high precision and reduced blind zone (with Verza Guidance System shown).



- ✓ Auto registration
- ✓ Needle visualization



Smart Navigation helps you guide needle tips securely and with higher confidence. Color-coded virtual biopsy lines make it easy to track needles in both the live ultrasound and the adjacent fusion image.

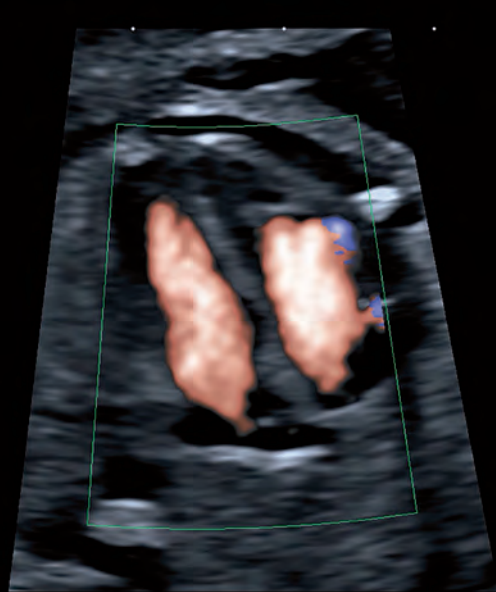


Canon Medical Systems' BEAM technology provides clearer visualization of biopsy needles in the live image. The function works with all common needle sizes and selects the optimal enhancement automatically.

# Exceptional detail for an optimized diagnosis

Both the busy clinician and the patient can benefit from high-resolution imaging and volumetric ultrasound. Aplio's comprehensive volume imaging suite extends your diagnostic capabilities of imaging with extraordinary image quality and easy and fast workflow.

- ☒ Luminance
- ☒ Advanced Dynamic Flow
- ☒ Multi View



Advanced Dynamic Flow™ adds non-comparative spatial resolution to standard color Doppler imaging to reveal minute flow patterns with accuracy and detail. ADF provides high frame rates, while maintaining the full B-mode image quality.



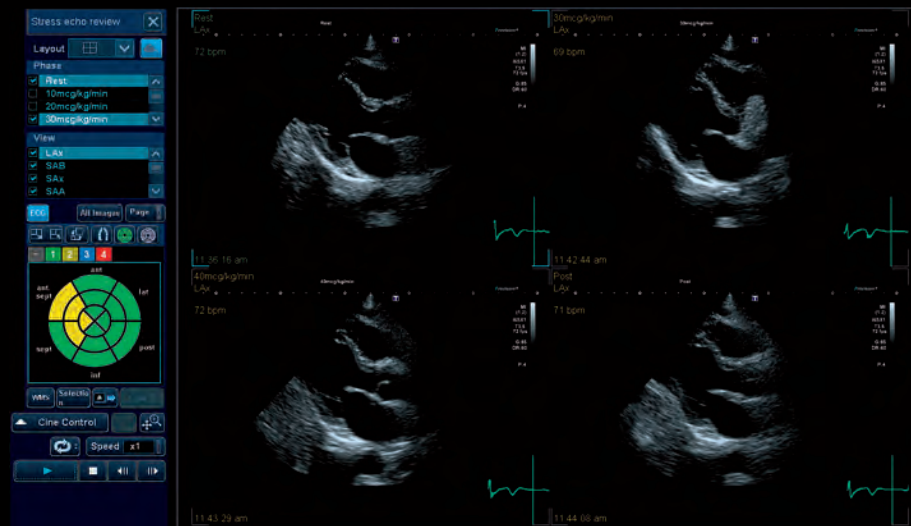
Luminance offers natural-looking 3D renderings of high quality and definition, providing strong visual feedback on depth and detail even in the first trimester.



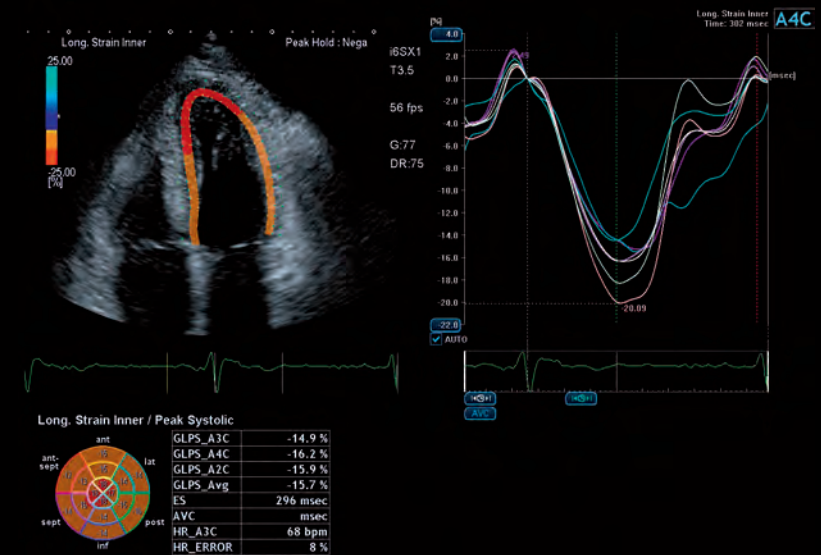
A wide range of MultiView options provide high-resolution cross sections, helping you to better understand anatomical relationships.

# Accurate quantification, regional myocardial function

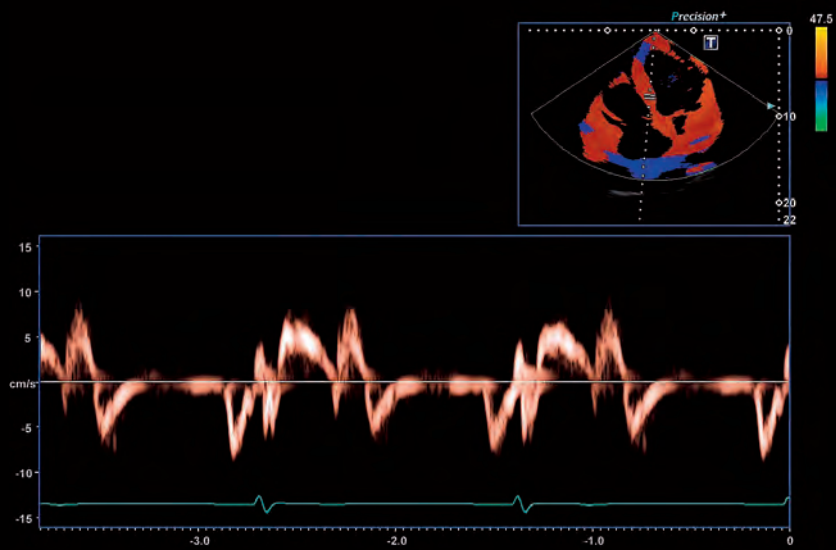
Functional assessment is at the heart of cardiovascular imaging. By providing valuable additional information in easy-to-understand visual, parametric or quantitative formats, Aplio's advanced clinical functions can help you obtain your diagnostic answer fast and reliably.



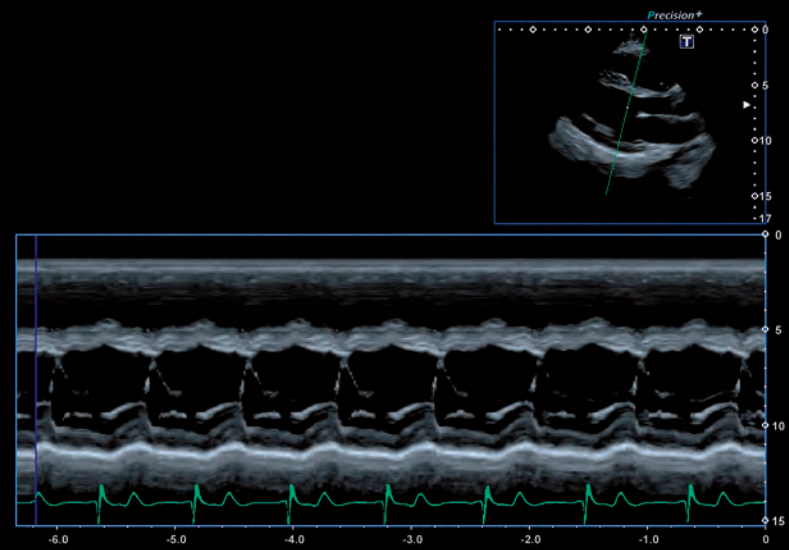
Supporting standard and user-defined protocols for both physical and pharmacological stress, Aplio offers a comprehensive package for fast and accurate wall motion assessment.



Aplio's advanced Wall Motion Tracking technology provides immediate visual and quantitative access to global and regional myocardial wall motion dynamics.



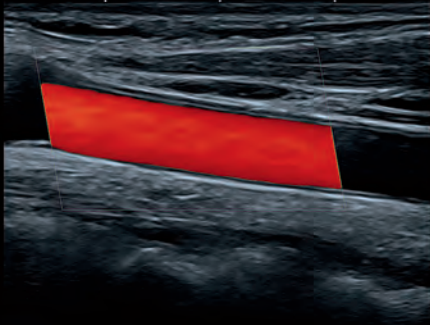
Aplio provides you with high frame rate Tissue Doppler images and Pulsed Wave TDI traces for a precise timing of cardiac events in both visual and quantitative formats.



Flex-M allows you to derive anatomically correct M-mode traces from live or stored 2D images with the same quality as in conventional M-mode.

# Consistent high-quality results, outstanding ergonomics

Vascular exams can be very challenging. Aplio dedicated transducers ensure excellent imaging resolution and sensitivity for all vascular applications, while automated scan protocols and measurements help you improve efficiency and consistency.



Aplio's clinical protocol assistant provides a reliable method to ensure that complex exams are done consistently patient after patient. Once activated, a clear, easy-to-read menu will guide you step by step through the entire exam.





Aplio's Color Quick Scan helps you optimize steering, sample volume and angle correction by simply pressing a button during vascular examinations, while baseline and velocity range are automatically optimized when a Doppler waveform is displayed.



Aplio i-series allows you to remotely operate the system from a wireless tablet. This can be particularly helpful during vascular exams where it can be difficult to scan a patient and reach the panel at the same time without losing sight of the monitor.

\*Not available in all regions.



## Designed with our users in mind

Smaller and lighter,\* Aplio i700 is easy to maneuver. With over 36 cm panel height adjustment, lateral slide and a fully articulating monitor arm, Aplio i700 helps you to optimally adjust the console to virtually any scanning position.

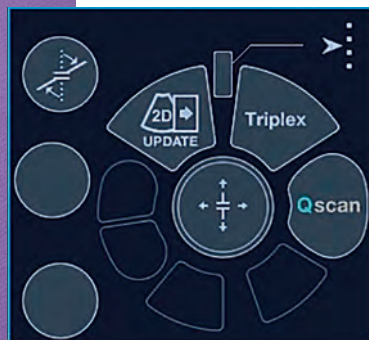
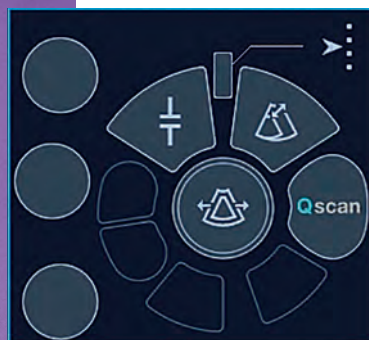
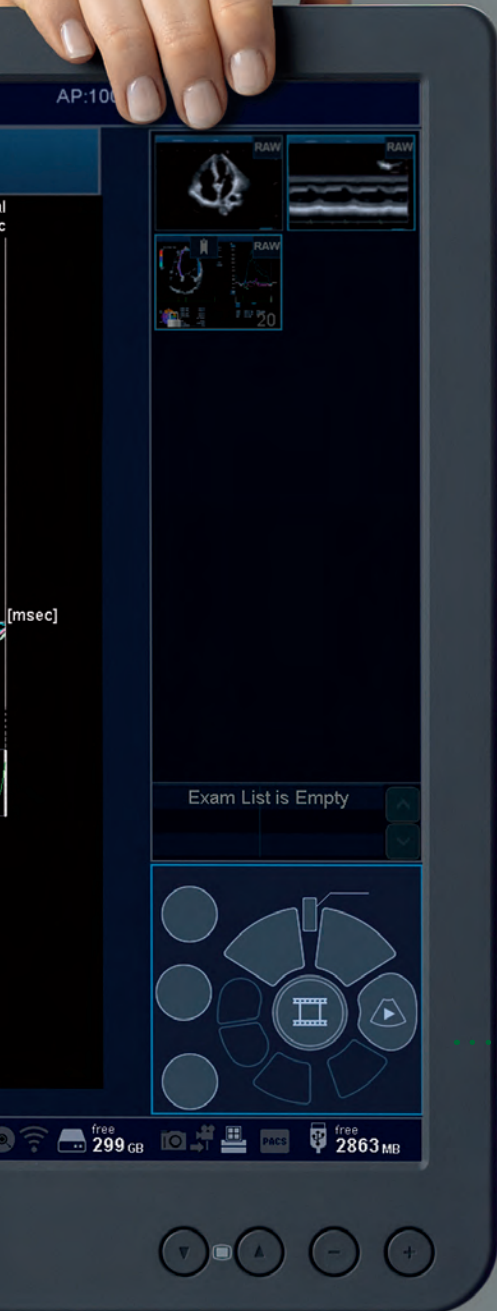
\* Compared to Aplio Platinum Series



- ✓ iSense productivity suite
- ✓ Lightweight ergonomic design

# Aplio makes your work flow

Aplio provides a host of intelligent workflow support and automation tools, helping you to achieve rapid results with consistent high quality.



The mode-sensitive on-screen navigation for the central trackball boosts your workflow and efficiency. By visually guiding you through the exam, it allows you to adapt and operate the system within a few minutes.



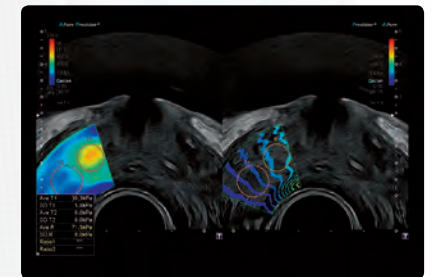


## Access all areas

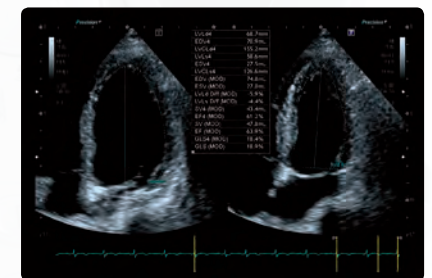
Aplio's large, tablet-style touch screen with three interactive zones allows you to quickly browse and select the desired function, while the rest of the display remains unchanged.



Realtime Quick Scan allows you to achieve greater consistency in your exams by ensuring that superb image quality is the benchmark at all times.



Thanks to Aplio's embedded raw data functionality you can optimize, review, analyze and report your clinical data anytime with no loss of functionality.



A range of automated measurement and analysis tools help you increase accuracy, consistency and speed of your exams.

**Aplio**  
*i-series*

Follow us: <https://us.medical.canon>



@CanonMedicalUS



+CanonMedicalUS



Canon Medical Systems USA, Inc.



+CanonMedicalUS

**Canon**

CANON MEDICAL SYSTEMS USA, INC.

<https://us.medical.canon>

2441 Michelle Drive, Tustin CA 92780 | 800.421.1968

©Canon Medical Systems, USA 2018. All rights reserved.  
Design and specifications subject to change without notice.

Aplio, ApliPure, Dynamic Flow and Made for Life are trademarks of Canon Medical Systems Corporation. Google+ logo and YouTube logo are trademarks of Google Inc. TWITTER, TWEET, RETWEET and the Twitter logo are trademarks of Twitter, Inc. or its affiliates. LinkedIn, the LinkedIn logo, the IN logo and InMail are registered trademarks or trademarks of LinkedIn Corporation and its affiliates in the United States and/or other countries. Lumason is a registered trademark of Bracco Diagnostics Inc.

ULBR12920US MCAUS0267EBA

**Made For life**