

GE Healthcare

LOGIQ S7 



Amazing versatility.



ecomaginationSM

Leading with versatility

With the growing use of ultrasound, healthcare providers are challenged to image patients of all **ages and sizes**, and encompass **a wide range of clinical areas** including abdominal, vascular, cardiac, musculoskeletal, small parts, pediatrics, neonatology, OB/GYN and urology imaging.

It takes a special ultrasound system to help meet those demands – and the updated release of the LOGIQ™ S7 ultrasound platform is equipped for the challenge. This mobile, shared-service ultrasound system is designed specifically to provide:

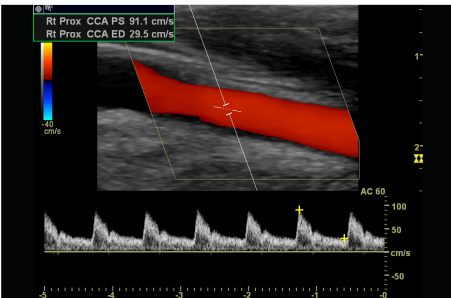
- Consistent quality performance to help enhance diagnostic confidence across applications
- User-sensitive design to help increase exam speed, as well as comfort and productivity
- Intuitive tools to enable high utilization across multiple applications
- All at an affordable price that helps meet expectations

LOGIQ S7 is well equipped for a variety of applications and ready to take on both routine and non-traditional challenges.

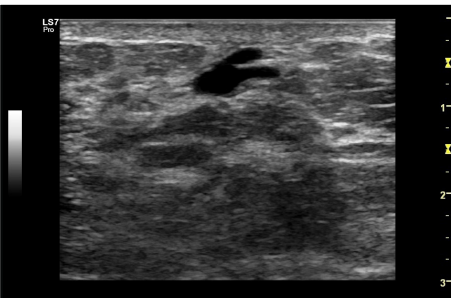
A true workhorse. Its sleek, lightweight design incorporates powerful technologies while enhancing workflow and user experience.



Stunning contrast resolution of liver with C1-5-D.



Common carotid artery Doppler with the 9L-D.



Exceptional contrast resolution in breast imaging 11L-D.

Sensational performance

LOGIQ S7 is engineered to provide quality and speed across applications.

- **S-Agile architecture** – Advanced LOGIQ architecture helps deliver consistently clear images with minimal keystrokes
- **Advanced transducers** – A wide portfolio of E-Series transducers, now expanded with 6 new models enables excellent images to be acquired quickly – just place and scan
- **Image optimization tools** – LOGIQ S7 is packed full of tools to help enhance image quality such as increased contrast resolution and improved border definition
- **Windows® 7 Operating System** – This powerful operating system combined with 64 bit computing helps provide speed and advanced processing power

Smart design

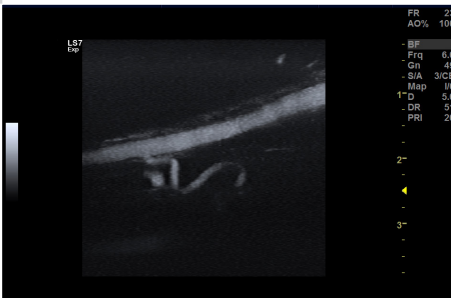
The LOGIQ S7 user centric design can help reduce operator fatigue and risk of injury, while enhancing comfort.

- **System adjustability** – LOGIQ S7 can be modified according to operator height and preference: the control panel swivels and moves up/down independently from the monitor for easy positioning, and the 19" LCD monitor on an articulated arm helps users attain an excellent viewing angle
- **Intuitive interface** – User-friendly keys, backlit controls and smart keys help promote peak performance. The 7" user-selectable touchscreen also helps facilitate uninterrupted scanning
- **Productivity tools** – Automated measurement tools help streamline laborious exams such as breast, cardiac, vascular, thyroid and obstetrics. Compare Assistant helps make comparisons to prior exams easy utilizing the advantage of GE Raw Data
- **Enhanced portability** – Go mobile with confidence using LOGIQ S7 portability features including WIFI connectivity, Bluetooth® printing, and the new Power Assistant battery power feature

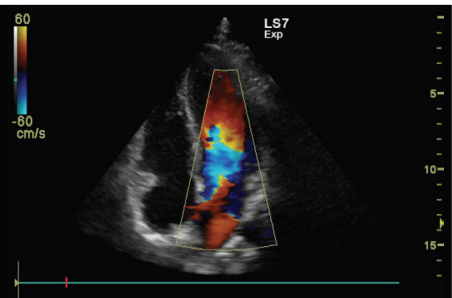
Specialized capabilities

Beyond its ability to scan a wide variety of body types, the LOGIQ S7 offers tools that help provide additional exam information, as well as enhance productivity and diagnostic confidence. Dedicated packages help clinicians perform efficient, specialized exams.

- **Advanced tools** help provide innovative, in-depth care
 - **Specialized features** include B-Flow™, Elastography with semi-Quantification², Vascular Quantification, Contrast Imaging, B-Steer+, Volume Imaging and Multi-Modality Imaging Display
 - **Specialized transducers** include convex, microconvex, linear, phased array, matrix array, the new biplane c/c, the 3D/4D Volume convex and endocavitary
- **Raw Data** – This feature captures data early in the image processing chain, which affords clinicians the freedom to perform image adjustments, measurements, and other functions after the exam is completed



B-Flow imaging of the Ulnar Artery using the L3-12-D transducer.



Apical four chamber view of the heart with the 3Sp-D.



Excellent detail in this rendered fetal face using the RAB4-8-D.



> **ecomagination**

LOGIQ S7 is among the most energy efficient in the industry. That means with every image you'll be using less energy, saving money, and contributing to a better environment. It's part of the GE commitment to invest in innovative solutions to environmental challenges, while empowering you with advanced tools for healthcare delivery. For more details please visit www.ecomagination.com.

About GE Healthcare

GE Healthcare provides transformational medical technologies and services to meet the demand for increased access, enhanced quality and more affordable healthcare around the world. GE (NYSE: GE) works on things that matter – great people and technologies taking on tough challenges. From medical imaging, software & IT, patient monitoring and diagnostics to drug discovery, biopharmaceutical manufacturing technologies and performance improvement solutions, GE Healthcare helps medical professionals deliver great healthcare to their patients.

UNITED KINGDOM

GE Medical Systems
Ultrasound
71 Great North Road
Hatfield, Hertfordshire
AL9 5EN
T 44 1707 263570
F 44 1707 260065

AMERICAS

GE Healthcare
9900 Innovation Drive
Wauwatosa, WI 53226
U.S.A.
T 1 888 202 5582

APAC

GE Healthcare Asia Pacific
4-7-127, Asahigaoka, Hino-shi
Tokyo 191-8503 Japan
Tel: +81 42 585 5111

ANZ

Tel: 1300 722 229 (Australia)
Tel: 0800 434 325 (New Zealand)

ASEAN

Tel: +65 6291 8528

Korea

Tel: +82 2 6201 3114

Responsive service and support

- **Connectivity** – Robust DICOM® connectivity that is compatible with many imaging IT solutions including GE Healthcare's ViewPoint™ 6 reporting and image management solution
- **Education** – Access to training and support to help enhance your expertise and your overall experience on your ultrasound system
- **Uptime protection** – Real time access to Clinical Applications and Technical Support Experts, as well as remote monitoring and assistance with InSite™ Express connection³
- **Service contract solutions** – Choose from basic service to comprehensive support with parts and labor included
- **Transducer care and protection** – Transducers are valuable investments and require specific care and safeguards when handling. Visit gehealthcare.com/transducers to find compatible disinfectants, cleaners and gels, as well as proper care and handling procedures
- **Join the LOGIQ Club** – This LOGIQ ultrasound user online community enables you to access to product education, tips and tricks, product information, videos, whitepapers and more. Visit www.logiqclub.net³

¹ Independent study performed by an independent sonographer.

² Elastography with semi-Quantification described in this brochure has not been cleared by the U.S. FDA and is not available for promotion or sale in the United States.

³ Offering may vary by region/country, please contact your GE Healthcare Representative for more information.

©2014 General Electric Company – All rights reserved.

General Electric Company reserves the right to make changes in specifications and features shown herein, or discontinue the product described at any time without notice or obligation. Contact your GE Representative for the most current information.

GE, the GE monogram, LOGIQ, ViewPoint, InSite and B-Flow are trademarks of General Electric Company or one of its subsidiaries.

GE Medical Systems Ultrasound & Primary Care Diagnostics, LLC, a General Electric company, doing business as GE Healthcare.

Troponin is a trademark of Nanosonics. Windows is a trademark of Microsoft Corporation. Bluetooth is a trademark of Bluetooth SIG Inc. Third party trademarks are the property of their respective owners.

DICOM is the registered trademark of the National Electrical Manufacturers Association for its standards publications relating to digital communications of medical information.

GE Healthcare GmbH
Beethovenstr. 239
42655 Solingen, Germany
T 49 212-28 02-0
F 49 212-28 02-28
www.gehealthcare.com

