

GE Healthcare

LOGIQ P3

Staying ahead of the curve



Ultrasound Expertise. Enhanced.



GE is a trusted partner of many healthcare providers around the world. GE's TruScan™ technology, incorporating SmartScan, TruAccess and ComfortScan, provides exceptional ultrasound performance.

GE's exclusive TruScan architecture makes the virtual rescans possible. With access to raw image data, you are able to perform virtual rescans, after the patient has left the exam room. TruScan allows raw image data to be stored early in the image chain for optimum flexibility during processing and analysis. The overall result is reduced probe time, fewer rescans, minimized interruptions, and improved workflow and throughput.

And the LOGIQ® P3 displays the innovative qualities that have made GE a global leader in ultrasound systems. Complemented by an all-new design that combines aesthetics, ergonomics and excellent functionality.

Enhanced value, in more ways than one

When you choose the LOGIQ P3, you get much more than just an advanced ultrasound system. You get increased diagnostic confidence with GE technology, along with dependable service support from a world leader in healthcare. Additionally, the LOGIQ P3 also has the advantage of quick and easy upgradeability. This ensures your investment stays protected, keeping you on the leading edge of ultrasound technology.

GE's service support allows you to get the most from your LOGIQ P3 investment. This translates into support and service where it's needed, when it's needed.

- In-depth on-site application and training
- Technical assistance from our dedicated and well-trained service engineers
- Quick trouble-shooting and ready availability of accessories and spare parts
- InSite™ II - allows remote access and troubleshooting by GE online engineers with any internet connection



Diagnostic confidence with

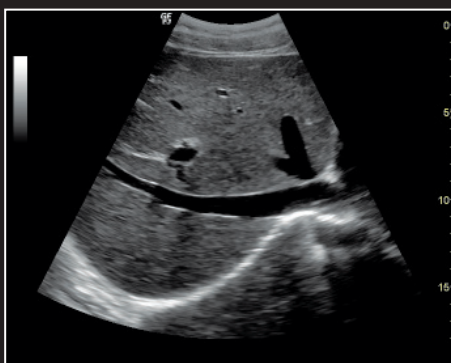


The LOGIQ P3 incorporates technologies that deliver deeper penetration, higher resolution and greater color sensitivity for advanced imaging. This results in a more confident diagnosis across a range of clinical applications.

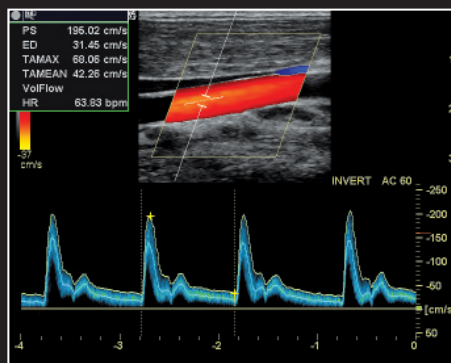
- **CrossXBeam™** imaging for enhanced tissue and border differentiation
- **Phase Inversion Harmonics** for higher spatial resolution & deeper penetration
- **Auto optimization** for B mode, Color and spectral Doppler

One touch image optimization, improves contrast resolution, color sensitivity or spectral Doppler depending on the active mode

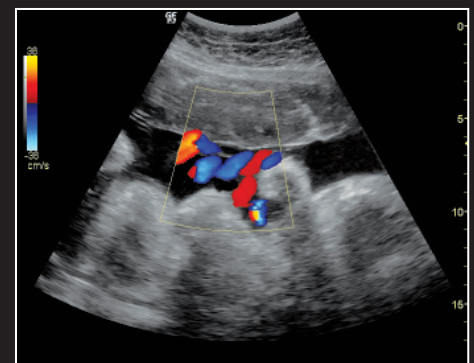
- **Auto TGC** provides image uniformity with a touch of a button



4C Abdomen using CrossXBeam and Harmonic imaging



11L Carotid artery with Color Doppler and Pulse Wave Doppler using CrossXBeam and Harmonic imaging



4C Umbilical cord using Color Doppler and Harmonic imaging

advanced imaging

As with the LOGIQ P3, GE continues its commitment to migrating advanced ultrasound technology across its family of systems. This philosophy stems from GE's vision to improve healthcare for more patients, and help more clinicians, around the world.

This results in the LOGIQ P3 having robust feature-sets, driving improved diagnostic capability and performance.

LOGIQ P3 supports a variety of lightweight and ergonomically designed probes from the GE family for multiple applications. These probes offer deeper penetration and excellent resolution. Additionally the advanced features and tools enable informed decision making.

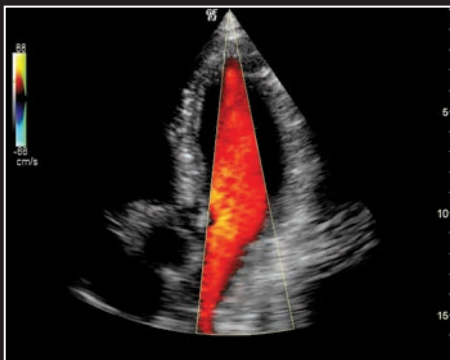
- **Virtual convex** enables extended field of view on Linear Probes
- **Anatomical M mode** - adjustable M cursor positioning, allows angle corrections for more accurate measurements on both frozen and live images
- **LOGIQview™** - extended field of view to image large organs, usually not seen in a single image
- **Easy 3D and Advanced 3D** - enables the clinician to see organ positioning relative to surrounding anatomy



Broadband, lightweight and multi-frequency 4C probe for abdominal, obstetrics and general applications



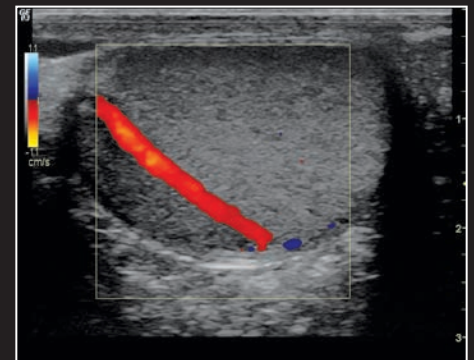
Broadband, lightweight, high-frequency 11L probe for small parts and vascular applications



3S 4 chamber heart image using Color Doppler to show Diastolic inflow



E8CS Uterus using Harmonics and extended field of view



11L Testicle using Color Doppler, CrossXBeam and Harmonic imaging

Saving and archiving images is an important part of the diagnostic process. The LOGIQ P3 has been designed to minimize the effort of data management. The connectivity solutions help you archive and maintain patient data in an organized manner.



Efficient data management

- **Direct store** Archive and retrieve patient data for further analysis
- **QuickSave**
 - One push image transfer directly to the USB
 - Network QuickSave for transmission of images across a network for remote viewing
 - Easy flow of data to EMR system
- **MPEGView** Easy transfer of images to AVI loops to CD and USB conveniently
- **Onboard reporting**
 - Standard templates for various applications
 - Report designer (option) for customizing templates
- **DICOM 3.0 compliant**
 - Structured reporting
 - Worklist
 - DICOM print

Exceptional ergonomics by design

The LOGIQ P3 has been designed following a careful study of the changing needs of clinical practices. A smart new shape, enhanced mobility and more convenient operation make it a system that is well-suited for multiple clinical settings.

- Sleek, streamlined, compact shape
- User friendly keyboard and controls
- Lightweight system for enhanced mobility
- High resolution, wide-angle 15" LCD with tilt and swivel functionality for better viewing



Flexible movement of monitor allows easy viewing by the user and patients.



Logically grouped keys help in easy operation while scanning.



©2009 General Electric Company – All rights reserved.
GE Medical Systems Ultrasound & Primary Care

Diagnostics, LLC, a General Electric company, doing
business as GE Healthcare.

General Electric Company reserves the right to make
changes in specifications and features shown herein,
or discontinue the product described at any time
without notice or obligation. Contact your GE
Representative for the most current information.

GE, GE Monogram, LOGIQ, CrossXBeam, TruScan,
LOGIQview and InSite are trademarks of General
Electric Company. Not all features or specifications
described in this document may be available in all
probes and/or modes.

UNITED KINGDOM

GE Medical Systems Ultrasound
2, Napier Road
Bedford MK41 0JW
T 44 1234 340881
F 44 1234 266261

EUROPE

GE Ultraschall Deutschland GmbH
Beethovenstr. 239, 42655 Solingen
Germany
T 49 212-28 02-0
F 49 212-28 02 28

AMERICAS

GE Healthcare
9900 Innovation Drive
Wauwatosa, WI 53226
U.S.A.
T 1 888 202 5582

ASIA

GE Healthcare Clinical
Systems ASIA
1105-1108 Maxdo Center
8 XingYi Road, Shanghai
200336
T 86 21 5257 4640
F 86 21 5208 0582

Healthcare Re-imagined

GE is dedicated to helping you transform healthcare delivery by driving critical breakthroughs in biology and technology. Our expertise in medical imaging and information technologies, medical diagnostics, patient monitoring systems, drug discovery, and biopharmaceutical manufacturing technologies is enabling healthcare professionals around the world to discover new ways to predict, diagnose and treat disease earlier. We call this model of care “Early Health.” The goal: to help clinicians detect disease earlier, access more information and intervene earlier with more targeted treatments, so they can help their patients live their lives to the fullest. Re-think, Re-discover, Re-invent, Re-imagine.

www.gehealthcare.com



GE imagination at work