

ECUBE 15 PLATINUM



ALPINION MEDICAL SYSTEMS Co., Ltd.

77, Heungan-daero 81beon-gil, Dongan-gu, Anyang-si, Gyeonggi-do, Korea

Homepage www.alpinion.com

E-mail international@alpinion.com

TEL +82-2-3282-0900

FAX +82-2-851-5591

Standalone clinical images may have been cropped to better visualize pathology.

ECUBE 15 PLATINUM

Quality in your daily practice



Copyright©2019 ALPINION MEDICAL SYSTEMS CO., LTD. All rights reserved.
Catalogue contents may change without prior notice to customers due to performance enhancements.



MKT-E15-OBG-PC-E1905-V4.5



ALPINION MEDICAL SYSTEMS
We are Ultrasound Professionals

E-CUBE 15 Platinum

Quality in Your Daily Practice

In a fast-paced medical care environment, demand continues to increase among medical practitioners for ultrasound diagnostic systems that offer accuracy and convenience in diagnosis process. Alpinion placed its focus on customer-oriented research and development activities to improve diagnosis environment in medical facilities; offer convenient functions with stability in performance; and enhance efficiency in workflow. E-CUBE 15 Platinum is a high-performing diagnostic ultrasound system with its diagnosis process meeting all of your demands.

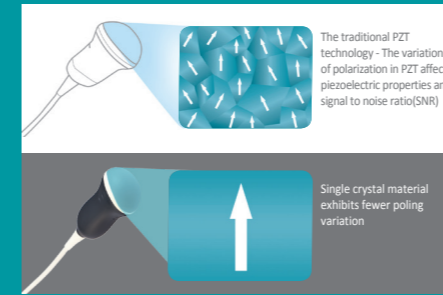
Sophisticated system and new UI(User Interface) design of E-CUBE 15 Platinum will add premium value to your daily practice. Combination of a vast range of features and the powerful architecture applied will provide superb image quality and help you facilitate productive diagnostic exams. In turn, you shall be able to spare extra time for communicating with individual patients to offer the quality care.



Excellence in **image quality** helps you make clinical decisions with confidence.

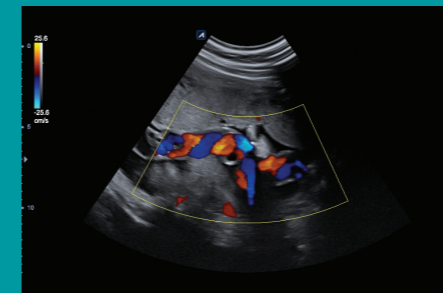


Superb Image Quality



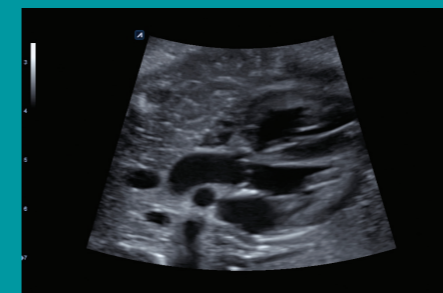
Crystal Signature™

Transducers, applied with Alpinion's own single crystal technology, will maximize the penetration to enable high-resolution imaging processes. Superior single crystal transducers result in a wide bandwidth and higher sensitivity that provide higher resolution and superior image quality to you.



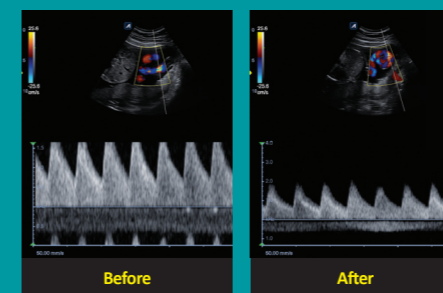
Enhanced Doppler performance

E-CUBE 15 Platinum deploys its new hardware to improve resolution and contrast of 2D images and uniformity of the images. Two individual pulsers of H/W architecture separately control each signals of 2D mode and Doppler to improve Doppler image quality while keeping the fundamental image quality, which also compounds better Doppler signals and controls focusing of transmitted signals in each mode to ultimately provide clearer and more precise images.



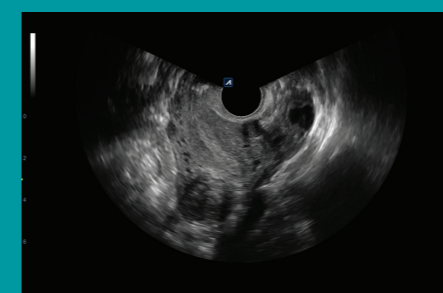
Write Zoom

The advancement of SW Beamforming performance improves the resolution and image pattern recognition of write zoom in 2D mode. With this enhanced zoom function, you can much more clearly see small details such as fetal organs.



Advanced Xpeed™

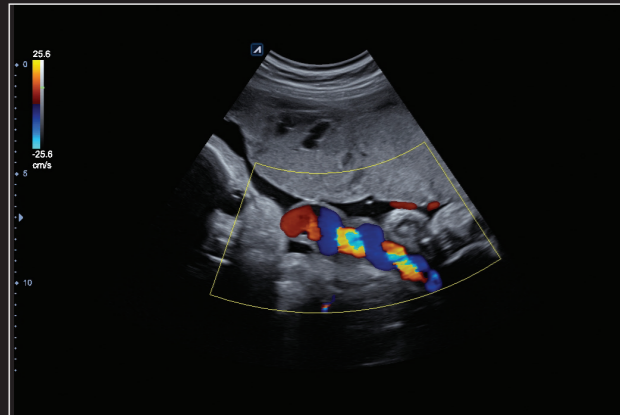
The improvement of Xpeed™ with the precision optimized technology applied enables E-CUBE 15 Platinum to detect and predict dynamic range levels in real time in 2D mode and in Spectral Doppler mode. The optimized clinical images with the lowest noise levels and the faster processing speed up your daily practice providing clinical confidence.



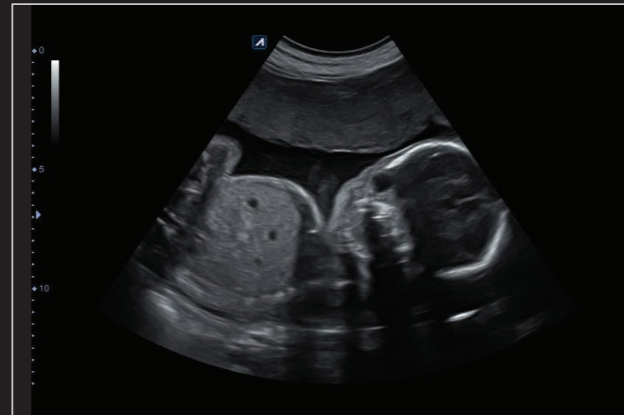
Wide angle endovaginal transducer

The endovaginal transducers (EV3-10X / EC3-10X) provide wide angle FOV (Max. 230°) and high-resolution images to enhance accuracy and speed in diagnosis. For instance, the transducers offer multiple information on a single image when making diagnosis of uterus and uterine appendages. Furthermore, the transducers can have their motion minimized to thus reduce discomfort for patients.

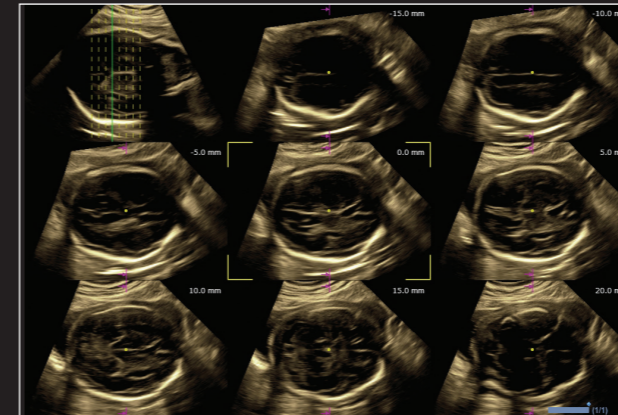
Quality Images in Your Daily Practice



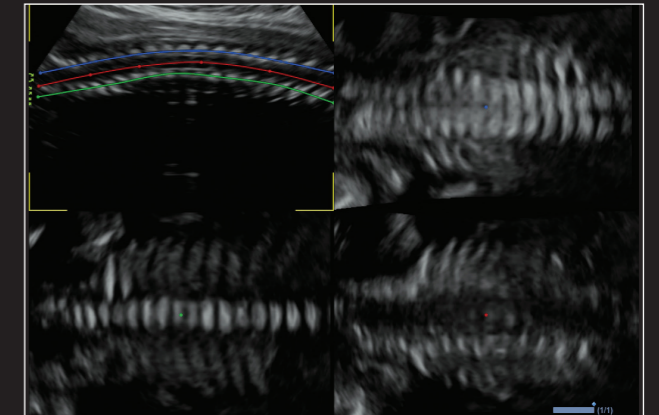
Umbilical artery in Color



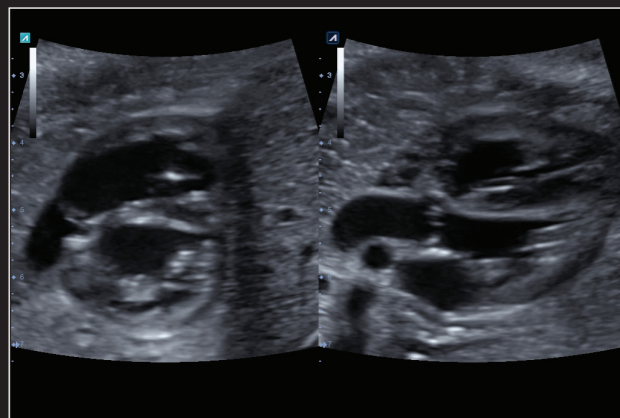
Fetus at 24 weeks in 2D



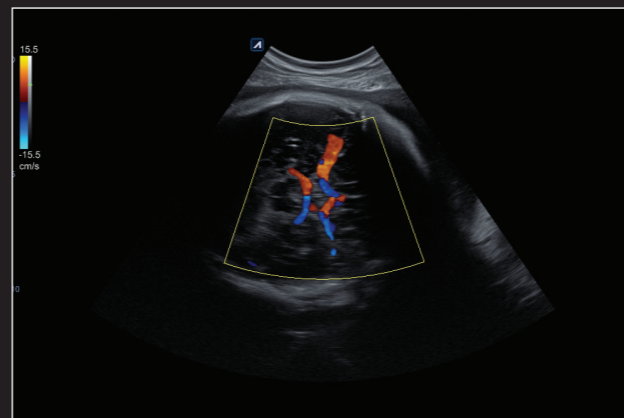
Fetal brain with Free Angle MSV (Volume Advance™)



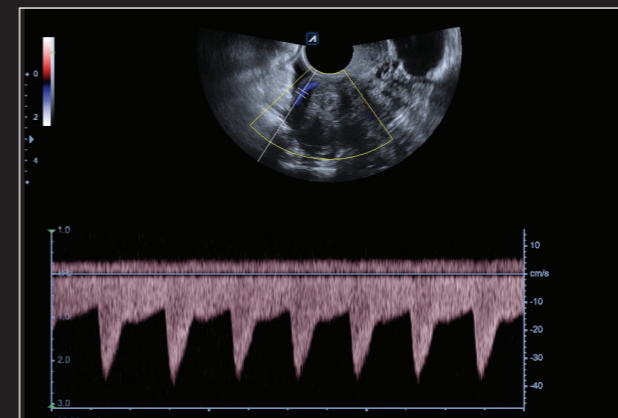
Fetal spine with AnySlice™ (Volume Advance™)



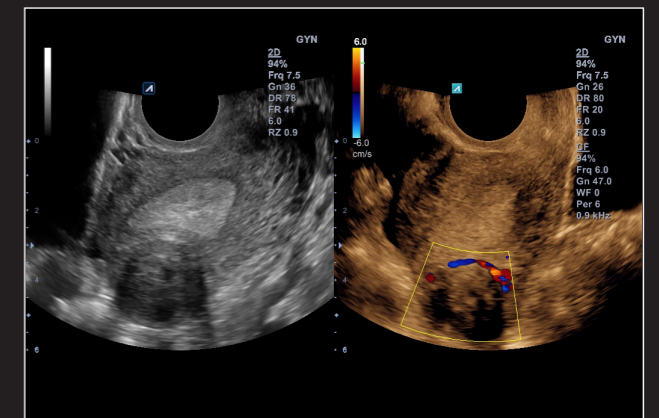
Write zoom fetal heart in Dual mode



Middle cerebral artery in Color



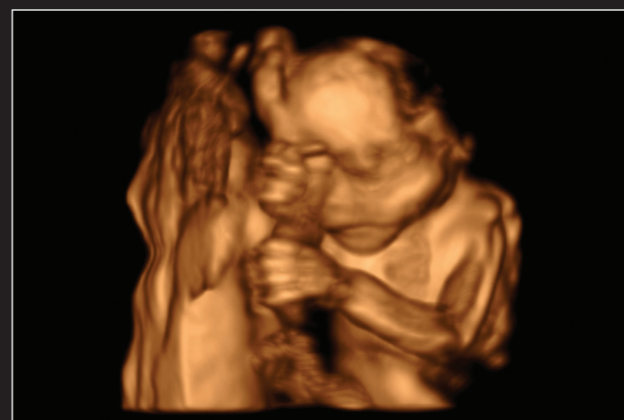
Uterine artery in PW



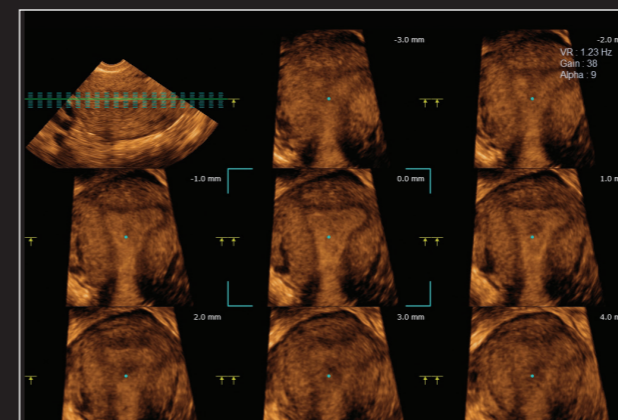
Uterine fibroid in Dual Live mode



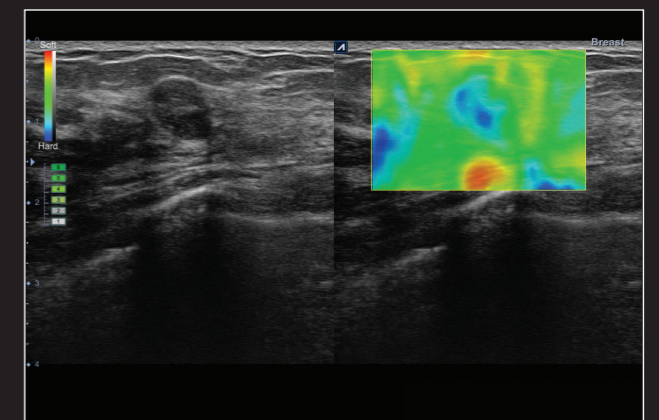
Hand of fetus



Fetus in 3D



Uterus with Free Angle MSV (Volume Advance™)



Breast with Elastography



Simplicity of system **design**
enhances your convenience in daily practice.

Ergonomic Design in Metallic Color: Grey or White



21.5-inch full HD LED monitor

High-resolution monitor of 1,920x1,080 pixels provides clear clinical images. IPS(In-Plane Switching) technology offers wide viewing angle. In addition, undistorted images, regardless of user locations and environment, achieve accuracy and convenience in diagnosis.



10.4-inch touchscreen

Convenience in workflow is drastically enhanced with combination of touchscreen with high sensitivity equivalent to tablet PCs and up-to-date UI design.



Motorized-height adjustment of control panel

With an up down push button, the adjustment of height of control panel is made easier.



Built-in gel warmer

Temperature can be controlled by three levels to flexibly adjust to different diagnostic exam circumstances to ensure patient comfort.



Articulating monitor arm

With the fully articulating monitor arm, users can freely place the monitor without any limitation from the patient position. The monitor can move up and down 140mm, swivel +/-90° and tilt +15°/-90°.



Transducer cable holders

Four transducer cable holders are available at your convenience. Users can keep the transducer cables neatly organized.

Intuitive and Efficient User Experience



New user interface

With the latest GUI design, which offers high readability, access to essential functions and modes becomes easier and faster.



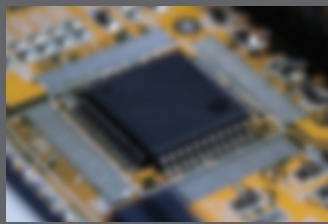
New control panel

These configurable six keys are arranged in the most intuitive layout to ensure efficiency in diagnosis process. Less number of keystrokes would reduce fatigue from use while increasing the speed of exams. The backlight of panel can be adjusted to user environment.



Power preset

With a single touch, users are able to preset system tailored to their preferences. Easy and fast "Preset" lessens the burden and time wasted for setting images.



Enhanced computing power

E-CUBE 15 Platinum offers high data processing speed with its 512 GB SSD memory & 1 TB HDD. It boasts booting time as short as approximately 53 seconds and faster operating speed thus to reduce time for your diagnosis practice.



Touch Clip View

Touch Clip View is presenting the previous or current ultrasound images to compare the current patient's images on the main screen. It is easy to compare current image with desired ultrasound images.



Simplicity of workflow **design** improves quality of patient care in daily practice.



Advancement of **technology** offers assistance in making informed decisions.

Enhanced Visualization



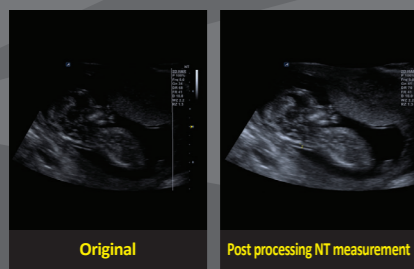
DPDI (Directional Power Doppler Imaging)

The technology brought improvement in delivering information related to direction of blood flow and sensitivity of Color Doppler. This is useful in sensing relatively slower blood flow in peripheral blood vessels (e.g. renal vessels, peripheral vessels and middle cerebral artery).



Live HQ™

With improved volume rendering technology, free movement of the light source and optimized color map have been made possible. All of these enable acquisition of more detailed information and realistic volume images. Thus Live HQ™ enhances level of understanding in anatomical knowledge of fetus for diagnosis with accuracy and speed.



Raw data post processing

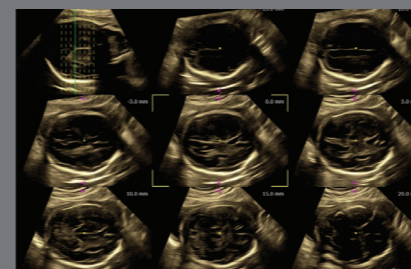
Acquired images can be post processed based on raw data. For images that are already stored, adjustment of parameters and re-measurement are available that users can make in-depth diagnosis and tracking observation after initial diagnosis.

Intelligent Analysis Tools



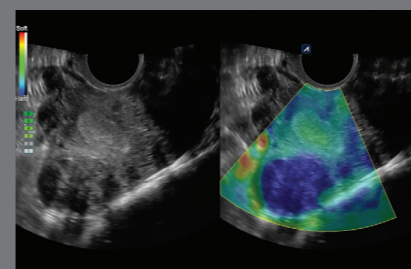
Auto NT

By designating ROI box on a desired part of nuchal translucency layer, the maximum value is automatically measured. Accurate and speedy measurement enables a swift examination in fast-paced medical scenes.



Volume Advance™

Volume Advance™ offers functions that have been upgraded further (Free Angle MSV, AnySlice™, Volume Analysis) from Volume Master™. Users can gain accurate and detailed understanding of anatomical and pathological images and volume information by cutting volume data into desired cross sections and viewing them continuously.



Elastography

Elastography is ultrasound imaging technology that reveals relative elasticity of tissues against external pressure. In parallel, relevant pathological information is offered to help reduce unnecessary biopsy. Pressure level on tissues can be monitored real time with an indication bar marked with its scale of one (1) to six (6) to enhance credibility of results.

Transducers






Developed and manufactured by ALPINION for unrivalled acoustic performance

* A biopsy kit is available

Convex

				
SC1-6H * High density single crystal OB/GYN, Abdomen, Emergency Medicine (EM)	SC1-4H * High density single crystal Abdomen, OB/GYN, Emergency Medicine (EM)	SC1-4HS * Wide angle high density single crystal Abdomen, OB/GYN, Emergency Medicine (EM)	C5-8N Micro convex Abdominal, Pediatric, Neonatal Cephalic, Cardiac, Peripheral vessel	SVC1-6H High density single crystal volume Abdomen, OB/GYN, Emergency Medicine (EM)

Linear

				
L8-17X * Extreme high density, 58.2mm wide aperture Breast, Musculoskeletal (MSK), Emergency Medicine (EM), Small Parts	L3-12X * Extreme high density, 58.2mm wide aperture Breast, Musculoskeletal (MSK), Emergency Medicine (EM), Small Parts	L3-12H * High density Breast, Musculoskeletal (MSK), Emergency Medicine (EM), Vascular, Small Parts	L3-8H * High density low frequency Vascular, Breast, Musculoskeletal (MSK), Emergency Medicine (EM), Small Parts, Appendix	IO3-12 Intraoral linear Intra-operative, Pediatric, Small organ, Musculoskeletal (MSK), Peripheral vessel

Endocavity

				
IO8-17 High frequency hockey stick Small Parts (Superficial), Musculoskeletal (MSK)	EV3-10X * Extreme high density OB/GYN, Urology, Emergency Medicine (EM)	EC3-10X * Extreme high density OB/GYN, Urology, Emergency Medicine (EM)	EV3-10H * High density endocavity (curved) Fetal, Trans-rectal, Trans-vaginal, Peripheral vessel, Urology	EC3-10H * High density endocavity (straight) Fetal, Trans-rectal, Trans-vaginal, Peripheral vessel, Urology



Volume Endo


VE3-10H * High density volume endocavity OB/GYN, Urology

Phased Array

	
MP1-5X Multi-active layer Abdomen, Cardiac, Emergency Medicine (EM)	SP3-8 Single crystal Abdomen, Cardiac, Emergency Medicine (EM)

Pencil Typed

	
CW5.0 Pencil Typed Cardiac, Peripheral vessel	CW2.0 Pencil Typed Cardiac

The confidence of system

We are committed to prioritize our customers who continue their efforts in swift and accurate diagnosis in every-day medical practices. Our major efforts include keeping high performance system up to date; pursuing product design with high durability in multiple times of examinations; and aiming simplicity in software to ensure usability. Further, we have been developing a variety of accessible service tools to offer customers speedy product services. Alpinion will value trust from customers and further, continue its commitment to paying close attention to voice of customers to develop and offer reliable products.



Convenient System Update

With Alpinion's unique imaging platform, FLeXcan™ Pro Architecture, consistency in image quality and convenience in system upgrade have been made possible throughout entire product life cycle. All core elements of the diagnostic ultrasound system are software-base that customers are able to keep their system up to date with easy and speedy upgrades.

Smart Data Protection

E-CUBE 15 Platinum can store and protect patient information with its patient lock function. With the function, patient information can be protected against the accidental deletion. As users are able to manage patient information while diagnosis mode is on, E-CUBE 15 Platinum can protect important information against batch edit and/or deletion.

High Quality Transducers

Alpinion has developed its own transducers to manufacture in its own facilities. Ergonomically designed products use lightweight and flexible cables to reduce fatigue of users. Durable connectors and sturdy exterior materials are designed to assure convenience and durability in any environment. Furthermore, Alpinion operates its own maintenance and warranty service teams for prompt response to customers' request.