

MX7

Ultrasound System



Innovative Platform. Unbelievable Design.



The MX7 Ultrasound System has been thoughtfully designed to overcome the obstacles clinicians face in today's challenging healthcare environments. With a customizable touchscreen and revolutionary, software-based beamformer technology, ZONE Sonography® Technology+, the MX7 System combines excellent image quality with an intuitive user experience to help ensure reliable and efficient diagnosis during the most challenging exams.

With a weight and thickness of just 6.6 lbs and 1.7 in, respectively, the MX7 System's main unit is one of the lightest and thinnest laptop ultrasound machines in the industry; and the Magnesium Alloy shell makes this System ideal for withstanding difficult clinical environments. In addition, this compact, durable, and powerful System houses advanced hardware built to maximize performance in all applications.

Since its founding, Mindray has been dedicated to developing innovative and accessible ultrasound solutions for every clinical environment. It is this commitment to excellence that has brought you ZONE Sonography® Technology+ (ZST+), and evolving industrial designs.



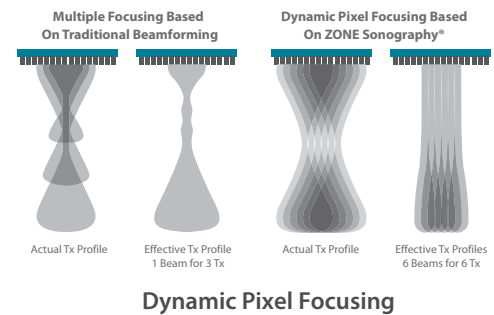
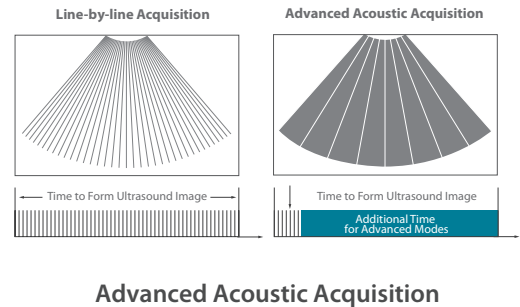
Unsurpassed Imaging

ZONE Sonography® Technology⁺

The industry's first virtual beamforming architecture, ZONE Sonography Technology⁺ creates a perfectly focused image every pixel, every frame, every time, from skin line to deepest depths. The MX7 Ultrasound System is the first-ever laptop-based system to be powered by ZST⁺, providing mobility and reliability in an extraordinarily compact design.

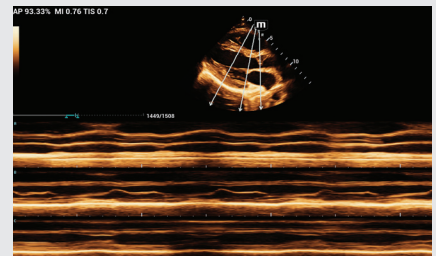
General Imaging Solutions

Whether in a clinic or office setting, clinicians require versatility in their ultrasound solutions. Exceptional general imaging performance and advanced analysis tools, combined with durability and portable design, make the MX7 the ideal partner for any clinical environment.



Cardiovascular Solutions

With its excellent image quality, exceptional workflow, and advanced cardiovascular enhancement technologies, the MX7 helps professionals perform advanced exams with confidence and ease.

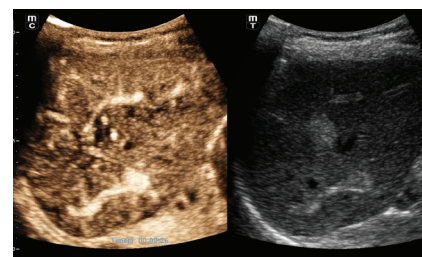


Anatomic M-Mode

Technology

Ultra-Wideband Non-Linear Contrast Ultrasound

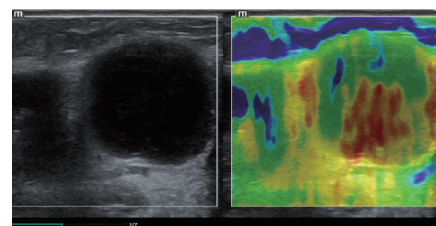
Ultra-Wideband Non-Linear (UWN⁺) contrast enhanced ultrasound (CEUS) on the MX7 detects and utilizes both second harmonic and non-linear fundamental signals. This generates a significantly enhanced image with better sensitivity, minor signals and longer agent duration under lower mechanical index.



UWN⁺ CEUS

Natural Touch Elastography

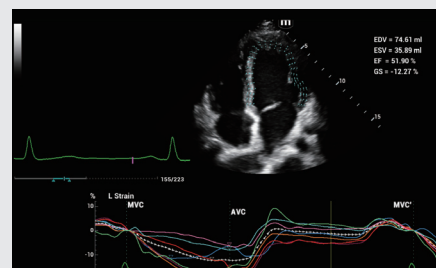
Based on Mindray's latest patented technology, Natural Touch Elastography reduces dependence on user operation technique, improving operator reproducibility for higher stiffness sensitivity and better stability.



Natural Touch Elastography

Tissue Tracking Quantitative Analysis

Based on the System's high-quality transducer technology, the MX7 improves tracking accuracy and effectiveness. In addition, with the unique benefit of on-site analysis, the tissue tracking quantitative analysis can be performed at the bedside, saving time and simplifying more challenging diagnoses.

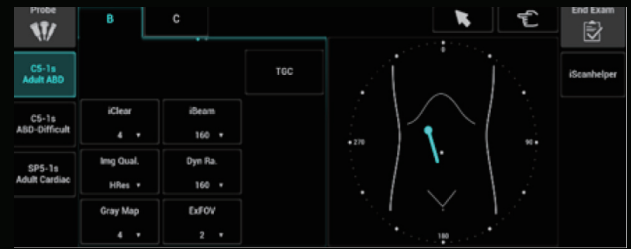


Tissue Tracking
Quantitative Analysis

Quality User Experiences

Intuitive Interface

With a highly interactive design, the MX7 provides very efficient workflow and ease of use for a better user experience. Quicker patient throughput, creates more efficiency throughout the exam.



Simplified Workflow

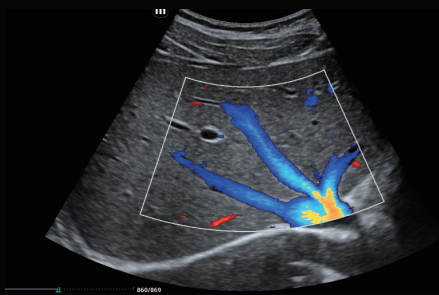
The multi-screen format makes it easier to access the information you need in fewer steps. The user-defined touchscreen simplifies workflow and reduces key strokes, while the tilting monitor angle ensures the image can be read from any angle.

User-Centric Design

By incorporating advanced design concepts throughout the software interface, it's easier to access each operation. With a customizable interface, the user can achieve the results they need, in a layout that suits them.



Abdomen



Hepatic Vein

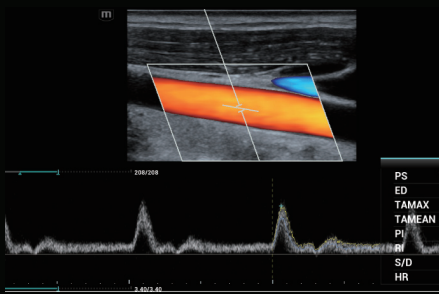


Renal Perfusion

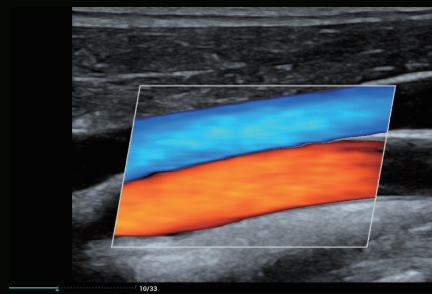


Liver

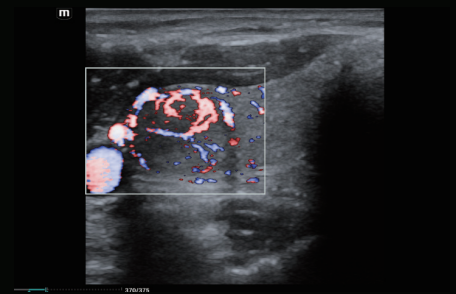
Vascular and Small Parts



Carotid Duplex



Carotid and Jugular Vein

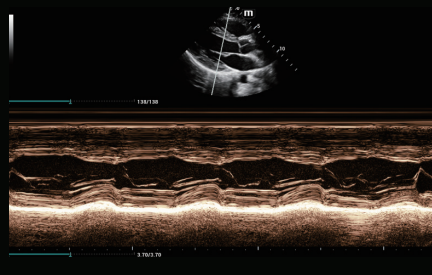


Thyroid Nodule

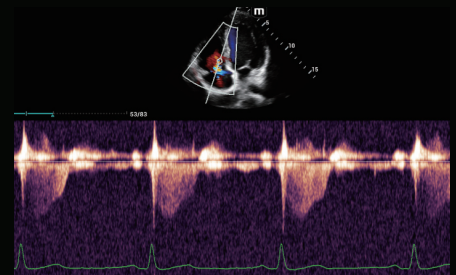
Cardiac



Adult Cardiac



M Mode



Tricuspid Regurgitation

eXceeding Expectations

- 1 Magnesium Alloy design
- 2 Convenient transducer extender
- 3 Cable management
- 4 Innovative storage design for utility and practicality
- 5 Large lifting range for user ergonomics
- 6 Vibration-reducing wheels for seamless transportability



Mindray North America

800 MacArthur Blvd., Mahwah, NJ 07430

Tel: 800.288.2121 Support: 877.913.9663 Fax: 800.926.4275 www.mindray.com

Mindray® is a registered trademark of Shenzhen Mindray Bio-Medical Electronics Co., Ltd. All brands and product names are trademarks of their respective owners. ©2020 Mindray DS USA, Inc. Subject to change. 10/20 P/N: 0002-08-40475 Rev A

mindray

healthcare within reach